

# C70 VW4 CHRONOMETER – Limited Edition

OWNER'S HANDBOOK

CHR. WARD  
LONDON

## TIME ON YOUR SIDE...

Your Christopher Ward watch has been designed and engineered by highly talented craftspeople to ensure not only accurate and precise timekeeping but also to bring a real pride of ownership that only luxury items of the highest quality can ever hope to deliver.

You have made an investment, a good one, and the aim of this handbook is to help you make the most of that investment during what I hope will be a lifetime of ownership.



Christopher Ward

### CONTENTS

THE VW4 STORY	2-3
C70 VW4 CHRONOMETER	4-5
THE COSC CERTIFIED CHRONOMETER	6-7
TECHNICAL INFORMATION	8-9
OPERATING INSTRUCTIONS	10-25
THE CW360 WATCH CARE PROGRAMME	26-27
GENERAL INFORMATION	28

## THE VW4 STORY

The 1957 victory at Aintree of the Vanwall VW4 racing car started with Tony Brooks behind the wheel and took the chequered flag with Stirling Moss in the driver's seat. This was the first time a World Championship Grand Prix race had been won in Britain by a British car, driven by British drivers.



Above: Moss punches the air as he takes the chequered flag, ahead of three chasing Ferraris.

Vanwall was the brainchild of Tony Vandervell, a former racing driver and a wealthy industrialist whose main product was the "Thin Wall" bearing that was used extensively in the international car and aircraft industries from the 1930s onwards. Part of his name and his product's name were combined to form Vanwall.

Vandervell wanted to create a successful British racing car that, he said, would be able "to beat those bloody red cars", a reference to the striking livery of Enzo Ferrari's vehicles. In fact, his early efforts at developing a winning machine involved him buying a racing car from Ferrari in early 1949 and again in 1951 and modifying them. There followed several years in which the Vanwall team steadily improved their cars and caught the motor racing world's attention with strong outings on international circuits.

Although the early Vanwalls were notorious for mechanical unreliability, the Vanwall VW4 was

“IT WAS SOMETHING I HAD DREAMED ABOUT FOR YEARS;  
WINNING A GRAND PRIX IN A BRITISH CAR. THEN, TO DO IT  
AT HOME INTO THE BARGAIN... A FANTASTIC EXPERIENCE.”  
STIRLING MOSS ON THE 1957 VICTORY,

viewed as a masterpiece of engine design in a sturdy yet light chassis.

What made the achievement of Moss and Brooks all the more laudable was that, despite its speed and power on the straight, it was difficult to steer. “A very heavy, ponderous, car to drive” is Moss’s assessment. In the rest of the 1957 season after Aintree, a Vanwall helmed by Moss also triumphed at a Grand Prix in Pescara, Italy and then, for a hugely satisfying hat-trick, at the Italians’ sacred circuit at Monza.



*Left; Tony Brooks and Stirling Moss share the laurels after switching their Vanwall cars on lap 27.*

## C70 VW4 CHRONOMETER – LIMITED EDITION

As the Vanwall cars were constructed in Maidenhead, the home of Christopher Ward, the astonishing story of how this British team fought off and beat the then all-conquering Ferrari's is particularly close to us, and we felt an overwhelming need to create a watch of equal style and panache to celebrate the achievement.

Inspired by the VW4's success in the 1957 British Grand Prix at Aintree, this design blends retro elements with the finest modern specifications of accurate timekeeping. Encompassing the renowned ETA 251.233 COSC movement, the C70 VW4 Chronometer comes with certification from the Contrôle Officiel Suisse des Chronomètres (COSC).

COSC is the Official Swiss Chronometer Testing Institute responsible for certifying both accuracy and precision of wristwatches in Switzerland.

The C70 VW4 Chronometer is, therefore, one of the most accurate quality watches in the world.

The Number 20 of the winning car occupies the 12 position on the face, while the 18 of the second machine is highlighted in Vanwall's trim colour of yellow on the bezel. Moss's astonishing 90.61mph best average lap speed is picked out in red on the tachymeter.

The reverse of the watch enshrines the British achievement with a deep-etched engraving.





## THE COSC CERTIFIED CHRONOMETER

To gain chronometer status, watchmakers submit their Swiss movements to COSC, an independent, non-profit making watch accuracy verification organisation based in Geneva, to be tested against the international standards of ISO and DIN.

Certification follows exhaustive testing. In achieving the coveted status of Certified Chronometer, a movement must not only be made from the highest quality components, but also be the object of special care on part of the finest horologists and technicians as it is painstakingly assembled.

Only movements which meet the precision criteria are granted an official certificate. Each uncased movement is individually tested for fifteen days, in five positions,

at three different temperatures. Movements are fitted with a second hand for tests and measurements are made daily with the aid of cameras. Based on all of these measurements, seven eliminatory criteria are calculated, each of which must be met.

The exacting and rigorous nature of the COSC certification process means that the achievement of Certified Chronometer status is extremely rare. In fact, of all the watches produced in Switzerland each year, **just 3% bear the coveted COSC 'bulletin de marche'** or certificate of watch performance. Which is why, when you read the words 'Certified Chronometer' on a Swiss watch you can be sure that the movement behind the elegant dial is a rare example of fine Swiss watchmaking which is accurate, precise... **and extremely rare.**



Bulle  
Gangs  
Boletín  
Watch Rat

Catégorie  
Kategorie  
Categoría  
Category

1 Be  
Partic  
Watch spe

ilateur balancier-spiral  
ralfeder-Oszill

CHRISTOPHER WARD

Thickness mm 5.05



## TECHNICAL INFORMATION

### FEATURES

- Worldwide limited edition of only 1957 pieces
- Swiss made
- 27 jewel Swiss quartz movement and COSC Certification
- Thermocompensated
- Convex sapphire crystal with anti-reflective coating
- Adjustable quick-release butterfly clasp
- Screw-in crown and backplate
- Chronographic dials with split minutes / seconds / tenths seconds
- Tachymeter bezel
- Water resistance - 10 ATM
- Spanish 'Toro Bravo' Italian leather strap
- Unique engraved individual serial number

### TECHNICAL INFORMATION

Diameter:	42mm
Height:	10.7mm
Weight:	80g
Calibre:	ETA 251.233 COSC
Case:	316L stainless steel
Water Resistance:	10 ATM (100 metres)
Strap:	22mm Leather



# HOW TO OPERATE YOUR C70 VW4

CHR. WARD  
LONDON

## DISPLAY AND CONTROL BUTTONS

### DISPLAY ELEMENTS

Minute Hand

Tenths

60 Minute Counter

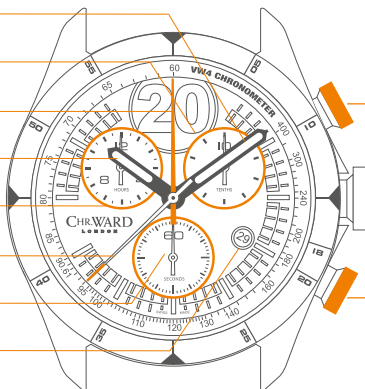
Hour hand

Hours

Centre stop-second

Seconds

Date Window



### CONTROL BUTTONS

Push-button A

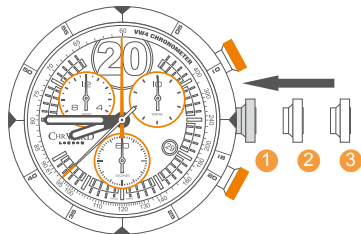
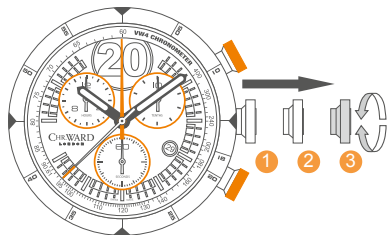
Crown

Push-button B

## SETTING THE TIME

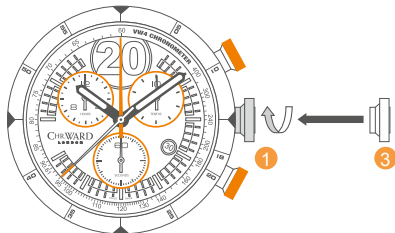
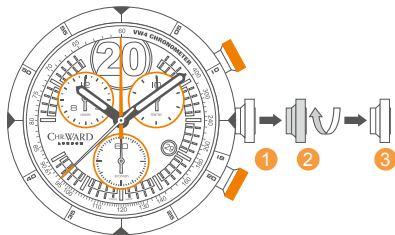
For a superior water resistance your crown is of the screw-in type. To get to position ① turn the crown anti-clockwise until it releases itself.

- Pull out the crown to position ③ (the watch stops).
- Turn the crown until you reach the correct time e.g. **08.45 hr.**
- Push the crown back into position ① and screw the crown in a clockwise direction in order to maintain water resistance. The crown should sit flush to the case.



## SETTING DATE (QUICK MODE)

- Pull out the crown to position **2** (the watch continues to run).
- Turn the crown clockwise, the hour hand moves in one hour increments until the correct date appears.
- Pull the crown to position **3**
- Push the crown back into position **1** until flush with the case and screw in.



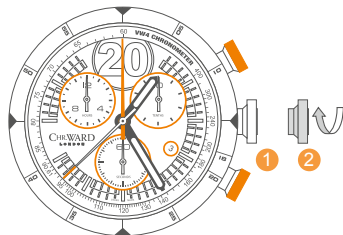
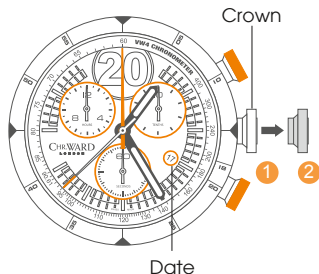
## SETTING THE DATE/TIME

### Example:

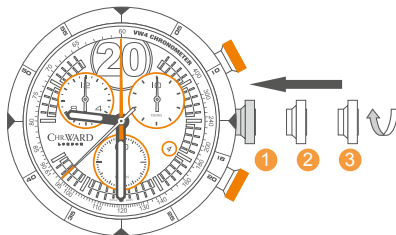
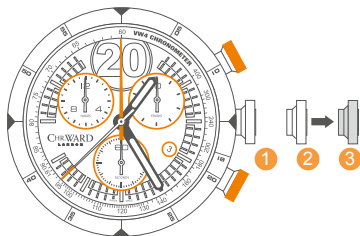
Date / time on the watch: **17th / 01.25 hr**

Present date / time: **4th / 21.25 hr**

- Pull out the crown to position **2** (the watch continues to run).
- Turn the crown clockwise until yesterday's date appears ie. **3rd**.



- Pull out the crown to position **3** (the watch stops).
- Turn the crown clockwise until the correct date ie. 4th appears (after passing through midnight).
- Continue to turn the crown until the correct time 21.30 hr appears.
- Push the crown back into position **1** until flush with the case and screw in.





## CHRONOGRAPH FUNCTIONS:

### DISPLAY ELEMENTS

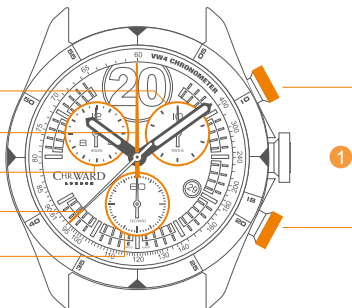
Tenths

60 Minute Counter

Hours

Centre stop-second

Seconds



### CONTROL BUTTONS

Push-button A  
(Start / Stop)

Push-button B  
(Reset)

- The **hour counter** measures 12 hours per rotation.
- The **minute counter** measures 60 minutes per rotation.
- The **centre stop-second** measures 60 seconds per rotation.
- The **1/10 second counter** measures 1 second per rotation.

PLEASE NOTE: Before using the chronograph functions, please ensure that:

- The crown is in position **1** (screwed in).
- The 4 chronograph hands are at zero position. Should this not be the case, the positions of the hands must be adjusted (see the chapter entitled 'Adjusting the chronograph hands to zero position').

## BASIC FUNCTIONS

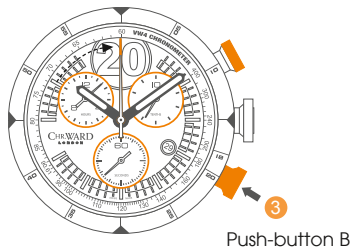
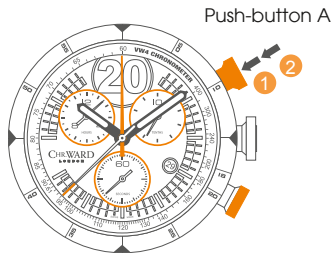
(START / STOP / RESET)

**Example:**

- 1 Start:** Press push-button A.
- 2 Stop:** to stop the timing, press push-button A once more and read the 4 chronograph counters: 4 min / 38 sec / 7/10 sec.
- 3 Zero positioning:** Press push-button B. (The 4 chronograph hands will be reset to their zero positions).

**Example of use:**

Timing a runner over 100m.



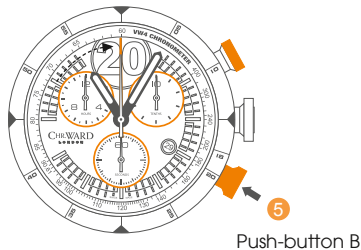
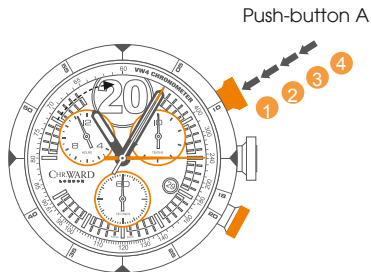
## ACCUMULATED TIMING

### Example:

- 1 **Start:** (start timing).
- 2 **Stop:** (e.g. 15 min 5 sec following 1).
- 3 **Restart:** (timing is resumed).
- 4 **Stop:** (e.g. 13 min 5 sec following 3).  
= 28 min 10 sec (accumulated measured time is shown)
- 5 **Reset:** The 4 chronograph hands are returned to their zero positions.
- 6 **Repeat:** as necessary.

### Example of use:

Overall time to complete a journey less the coffee breaks.



## INTERMEDIATE OR INTERVAL TIMING

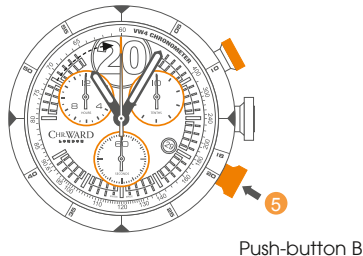
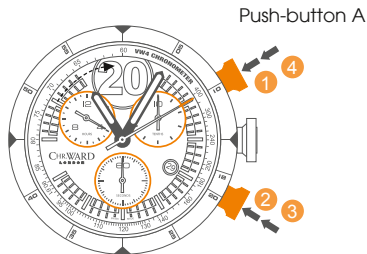
### Example:

- 1 **Start:** (start timing).
- 2 **Display interval:**  
e.g. 10 minutes 10 seconds (timing continues in the background).
- \* 3 **Making up the measured time:**  
(the 4 chronograph hands are quickly advanced to the ongoing measured time).
- 4 **Stop:** (final time is displayed).
- 5 **Reset:** The 4 chronograph hands are returned to their zero positions.

### Please note:

- \* Following 3, further intervals or intermediates can be displayed by pressing **push-button B**.

**Example of use:** 4 x 100m relay.

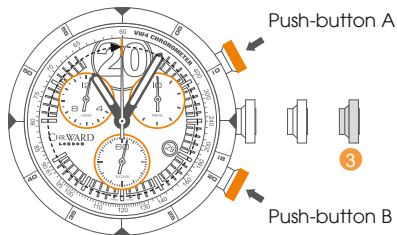
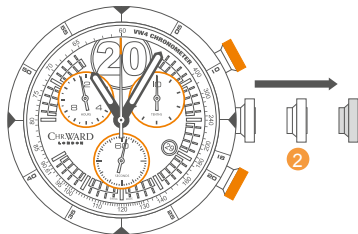


## ADJUSTING CHRONOGRAPH HANDS TO ZERO POSITION

### Example:

One or several chronograph hands are not in their correct zero positions and have to be adjusted (e.g. following a battery change).

- Pull out the crown to position **2** press **Button A** to adjust the hour chronograph hand and **Button B** to reset the 60 minute counter to zero
- Pull out the crown to position **3**. Push **Button A** to adjust the stop second hand and **Button B** to adjust the tenths seconds hand.





Swiss Made COSC Certified Chronometer

C70 VW4  
MOSS/BROOKS  
Aintree



FIRST ALL BRITISH  
WORLD CHAMPIONSHIP  
RACE WIN  
1957

001/1957

## WATER RESISTANCE

Although your watch has been through vigorous static pressure testing, it is worth remembering that there are many variables that can affect the water resistance of your watch.

For instance, arm movements during swimming and the sudden impact of diving and water sports will drastically increase the pressure the watch is under. Wearing your watch in the bath, shower, or sauna can also have an effect as a rapid increase in temperature can cause seals to expand and in extreme cases, malfunction or create condensation.

For these reasons, the water resistance rating of your watch (as shown) **should only ever be considered a guideline** and we strongly recommend they are always adhered to.



### **1 ATM** (10 METRES)

Safe to wear your watch while washing your hands with tap water.



### **3 ATM** (30 METRES)

Washing your car and/or general hose pipe usage.



### **5 ATM** (50 METRES)

Water resistant to most household shower units.



### **10 ATM** (100 METRES)

Safe to use while snorkelling in open water.



### **30 ATM** (300 METRES)

Ideal for experienced divers and those practising scuba-diving.



### **50 ATM** (500 METRES)

Professional divers, experiencing prolonged exposure underwater.



### **100 ATM** (1000 METRES)

Professional deep sea diving.

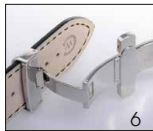
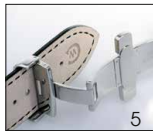


## STRAPS & BRACELETS

As you would expect, we place as much emphasis on the quality of our straps and bracelets as we do our watches. We only use the finest leathers for our straps and our premium alligator straps are all ethically sourced from CITES approved farms in Louisiana.

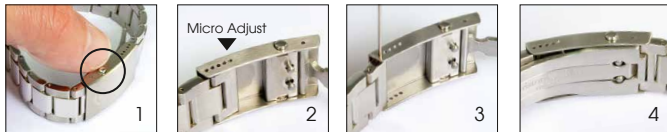
Similarly, we only use the finest metals in the construction of our bracelets, all of which are precision engineered for durability, efficiency and comfort. The following guidelines explain how easy it is to use and adjust your Christopher Ward strap or bracelet.

### LEATHER STRAP WITH EASY RELEASE BUTTERFLY CLASP



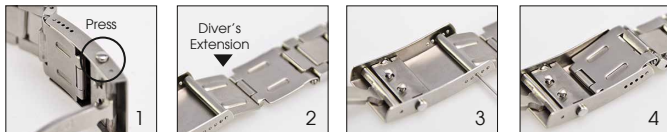
1. Locate the clasp
2. Press the quick-release
3. Pull open the clasp
4. Locate the opening
5. Thread strap through
6. Secure the strap
7. Close the clasp
8. Complete

## BRACELET WITH MICRO-ADJUSTMENT



1. Press to release
2. Expand adjustment
3. Adjust pin position
4. Close the clasp

## DIVER'S EXTENSION (WHERE APPLICABLE)



1. Press to release
2. Expand adjustment
3. Adjust pin position
4. Close the clasp

## QUICK-RELEASE PINS (WHERE APPLICABLE)



1. Locate the release
2. Drag button back
3. Detach strap
4. Align holes to click a new strap in position

# THE CW360 WATCH CARE PROGRAMME

Your watch is constructed from the finest components and materials available including one of Switzerland's finest quartz movements. As with all watches of this quality, with the right care and attention, your new Christopher Ward watch has the potential to become an heirloom piece giving further joy to future generations. It's for this reason we have created our industry leading approach to after-sales care which we term the CW360 Watch care Programme.

Christopher Ward's CW360 Watch Care Programme is designed to deliver you complete peace of mind and the best support possible throughout the lifetime of your ownership. The programme has three key elements:

**1 60 DAY FREE RETURNS**

---

Our success depends on you being completely happy with your new Christopher Ward watch. If for any reason you aren't, you have up to 60 Days to return your watch, absolutely free of charge, and receive a replacement or full refund by return – and without any quibbles from us!

**2 FREE 5 YEAR MOVEMENT GUARANTEE**

---

Your watch, at its heart, has a top quality precision engineered Swiss movement – so it's very unlikely to give you problems with the minimum amount of care and attention, including a regular service. We recommend you return your watch to us every 3/4 years for a service, so our expert technicians can keep your fine timepiece in the peak of condition. (We recommend that whenever your quartz battery needs changing you consider having the watch serviced at the same time to keep it in perfect working order.)

**3 SERVICING & REPAIRS...THE CHRISTOPHER WARD WAY...**

---

Our innovative approach to servicing and repairing your Christopher Ward watch means that having your watch serviced or repaired doesn't mean months of waiting followed by an exorbitant bill – which is pretty much the experience guaranteed by every other luxury watch brand. We have developed an easy, quick and affordable expert service and repairs programme that doesn't cost the earth and has your watch back where it belongs – on your wrist – in double-quick time.

Visit our website for more details about the CW360 Watch Care Programme

## KEEPING IN TOUCH WITH CHRISTOPHER WARD

From small beginnings just a few short years ago (our first workshop was actually a refurbished chicken shed!), Christopher Ward has won a worldwide following for his eponymous watch brand and can justifiably claim to manufacture the most affordable luxury watches in the world.

For many, the philosophy behind the brand, of trying to put luxury watches within the reach of everyone, is as attractive as the watches themselves, as is the very open approach of the business which means that Chris and the team spend a lot of time communicating personally with our customers – many of whom have become friends.

As the owner of a Christopher Ward watch, if ever you need to get hold of us we are at

your service. We have listed some useful contact details on the back cover.

There is also always something new going on at our website at **[www.christopherward.co.uk](http://www.christopherward.co.uk)** and, if you haven't already discovered the independent forum dedicated to our brand at **[www.christopherwardforum.com](http://www.christopherwardforum.com)** we would recommend a visit. Informative and fun, it's a great place to hear the unexpurgated view of Christopher Ward of London!

# CHR. WARD

L O N D O N

## HEAD OFFICE

Christopher Ward (London) Limited,  
1 Park Street, Maidenhead,  
Berkshire SL6 1SL United Kingdom  
+44 (0)1628 763040

## CUSTOMER SERVICES

UNITED KINGDOM: +44 (0)844 875 1515  
UNITED STATES OF AMERICA: 1.877.226.8224  
customerservices@christopherward.co.uk  
technical@christopherward.co.uk

## WEBSITE

[www.christopherward.co.uk](http://www.christopherward.co.uk)  
[www.christopherward-usa.com](http://www.christopherward-usa.com)